

LYING IN THE NORTHWEST ONE-QUARTER OF SECTION 36, TOWNSHIP 42 SOUTH, RANGE 42 EAST, CITY OF RIVIERA BEACH, PALM BEACH COUNTY, FLORIDA

UNPLATTED

S88°26'48"E 914.71'

UNPLATTED

TRACT "0-6"  
(50' LANDSCAPE BUFFER EASEMENT)

NORTH LINE OF THE SOUTH ONE-QUARTER OF NORTH ONE-HALF OF THE NORTHWEST ONE-QUARTER OF SECTION 36

N01°33'12"E 24.00'  
S88°26'48"E 81.14'

N01°33'12"E 145.20'

N43°18'47"W 35.27'

N01°49'15"E 386.20'

UNPLATTED

N88°10'45"W 24.00'  
S46°41'13"W 35.44'

N88°26'48"W 73.52'

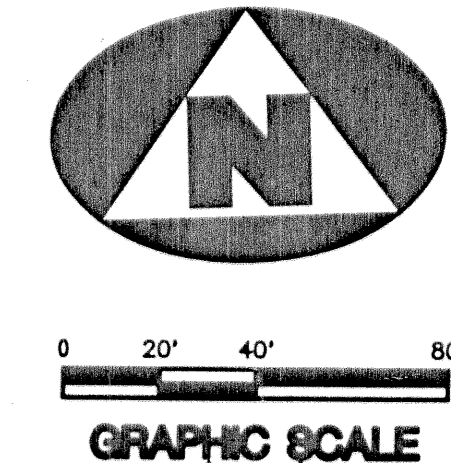
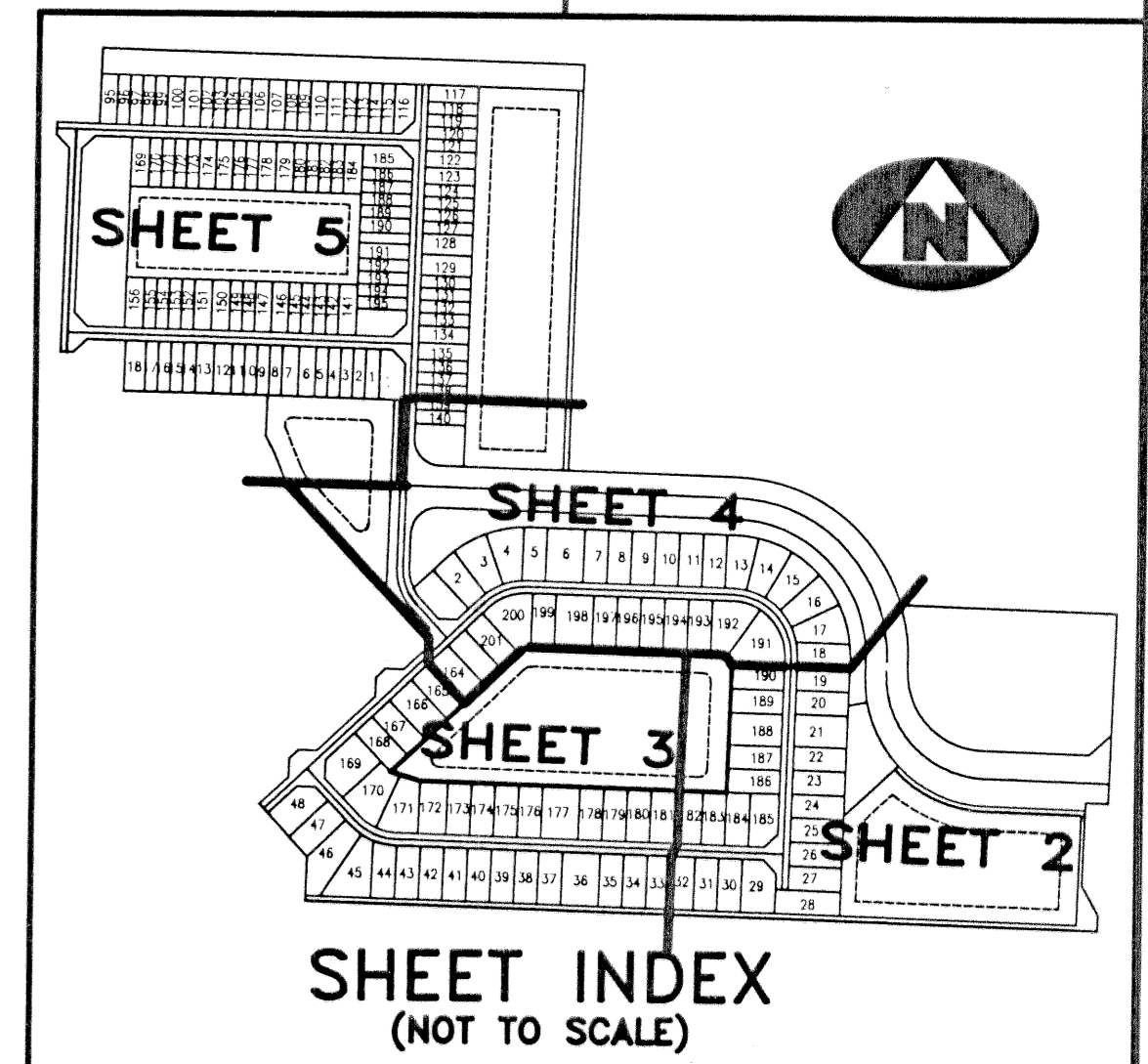
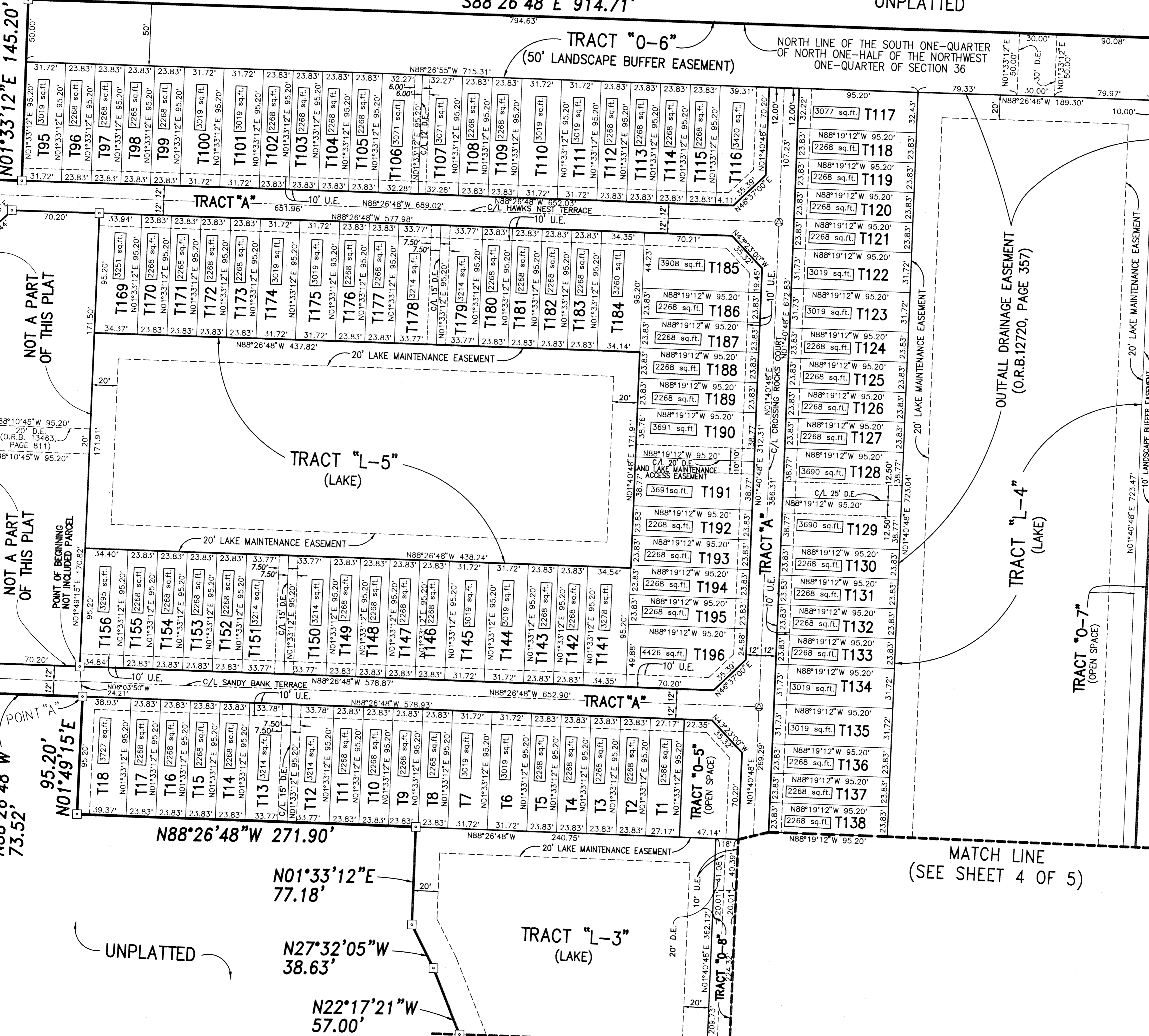
95.20'  
N01°49'15"E

N88°26'48"W 271.90'

N01°33'12"E 77.18'

N27°32'05"W 38.63'

N22°17'21"W 57.00'



- SURVEYOR'S NOTES:**
1. THE BASE BEARING, AS SHOWN HEREON, IS SOUTH 01°53'30" WEST ALONG THE EAST LINE OF THE NORTHWEST ONE-QUARTER OF SECTION 36.
  2. IN THOSE INSTANCES WHERE UTILITY/DRAINAGE STRUCTURES ARE CONSTRUCTED IN CONFLICT WITH THE PLATTED PERMANENT CONTROL POINTS (P.C.P.) POSITION, STRADDLERS MONUMENTED AS PERMANENT CONTROL POINTS WILL BE SET TO REFERENCE THE PLATTED P.C.P. POSITION.
  3. LINES WHICH INTERSECT CURVES ARE NOT RADIAL UNLESS OTHERWISE NOTED.
  4. THIS INSTRUMENT WAS PREPARED BY WM. R. VAN CAMPEN, P.S.M. IN AND FOR THE OFFICES OF BENCH MARK LAND SURVEYING AND MAPPING, INC., 4152 WEST BLUE HERON BOULEVARD, SUITE 121, RIVIERA BEACH, FLORIDA.

**BENCH MARK LAND SURVEYING & MAPPING, INC.**  
 4152 W. BLUE HERON BOULEVARD • SUITE 121  
 RIVIERA BEACH • FLORIDA 33404  
 PHONE: (561) 848-2102 • LB. 2171 • FAX: (561) 844-9659  
 EMAIL: bmlsm@aol.com WEB: http://members.aol.com/bmlsm

**RECORD PLAT OF**  
**NORTH COUNTY P.U.D. PLAT 1**

DWN HERMIE	FB	DATE 6-4-2001	WO.# P250
CKD	FILE P250SHTS.dwg	SCALE 1"=40'	SHEET 5 OF 5